

NEW

Set healing in motion

It's all about the outcome



Mepilex[®] Border Post-Op


Mölnlycke[®]



An essential part of recovery

Finding your balance

For your post-operative patients, this could mean starting to move again. For you, it means finding a way to balance a range of concerns like your patients' pain, mobility and overall satisfaction – as well as preventing infection. With so many demands to meet, your surgical wound dressing is no place to compromise.

The many challenges of surgical wound management

Surgical site infections (SSI)

Dressing changes and skin damage increase the risk of infection.

Up to **41%** of orthopedic patients suffer from post-operative blistering¹

Supporting patient mobility

To help reduce the risk of deep vein thrombosis (DVT), patients should be mobilized as soon as possible.

Up to **84%** of knee replacement patients are at risk of developing DVT²



Ensuring patient satisfaction

Complications from surgery delay recovery and impact outcomes.

Over

9

extra days in hospital on average if a patient acquires an SSI³

Managing costs

Complications from surgery drive up healthcare costs.

€6.532

average increase in healthcare costs if a patient acquires an SSI⁴

Mepilex® Border

The dressing for surgical wound

Specifically designed for surgical wounds, Mepilex Border Post-Op helps you balance the many demands of surgical wound management and deliver good patient outcomes^{1, 5-7}.

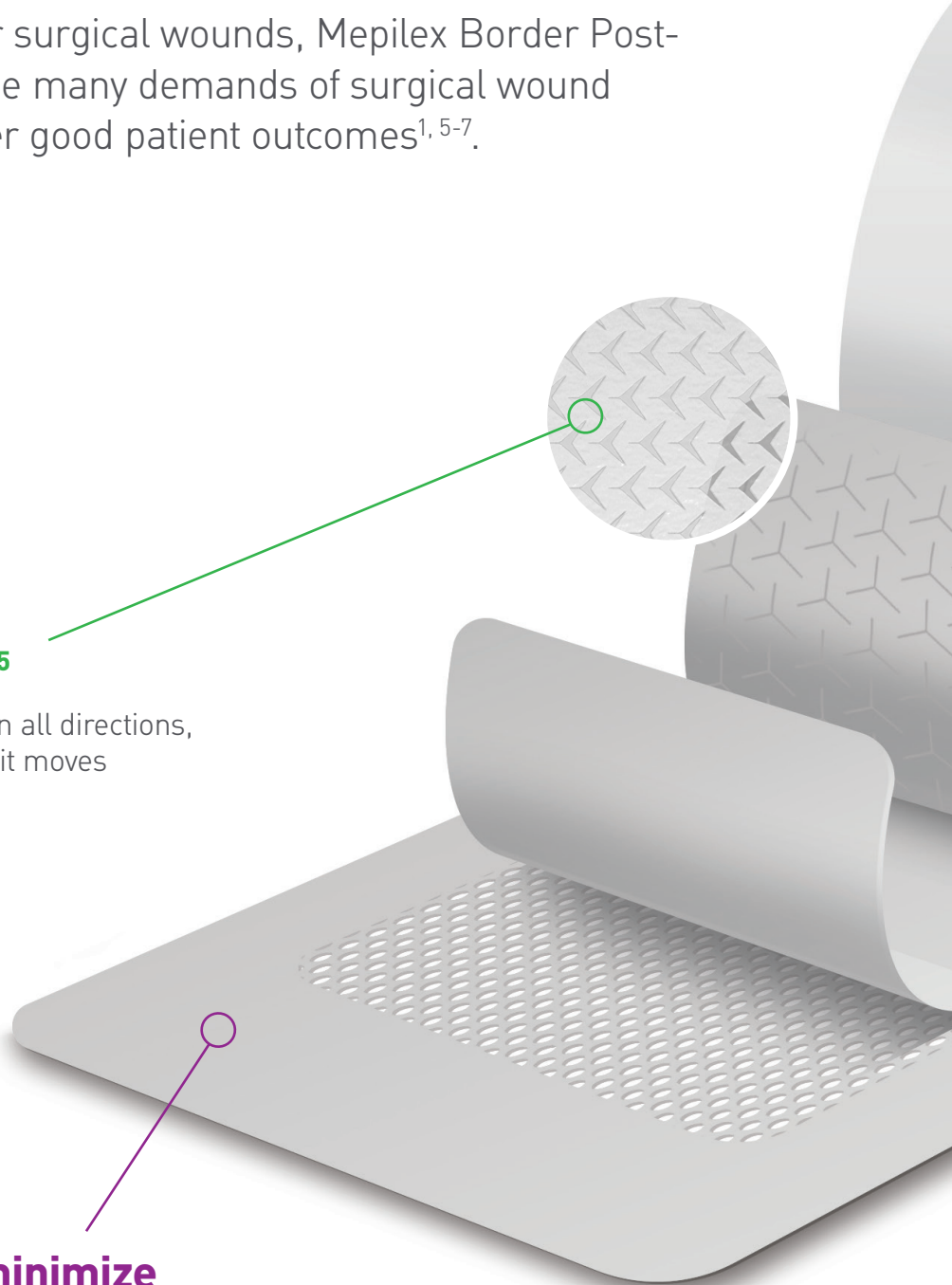
Supports early patient mobilization⁵

Unique flex-cut pad stretches in all directions, conforming to the body even as it moves

Clinically shown to minimize dressing-related skin damage and pain^{1,5-7}

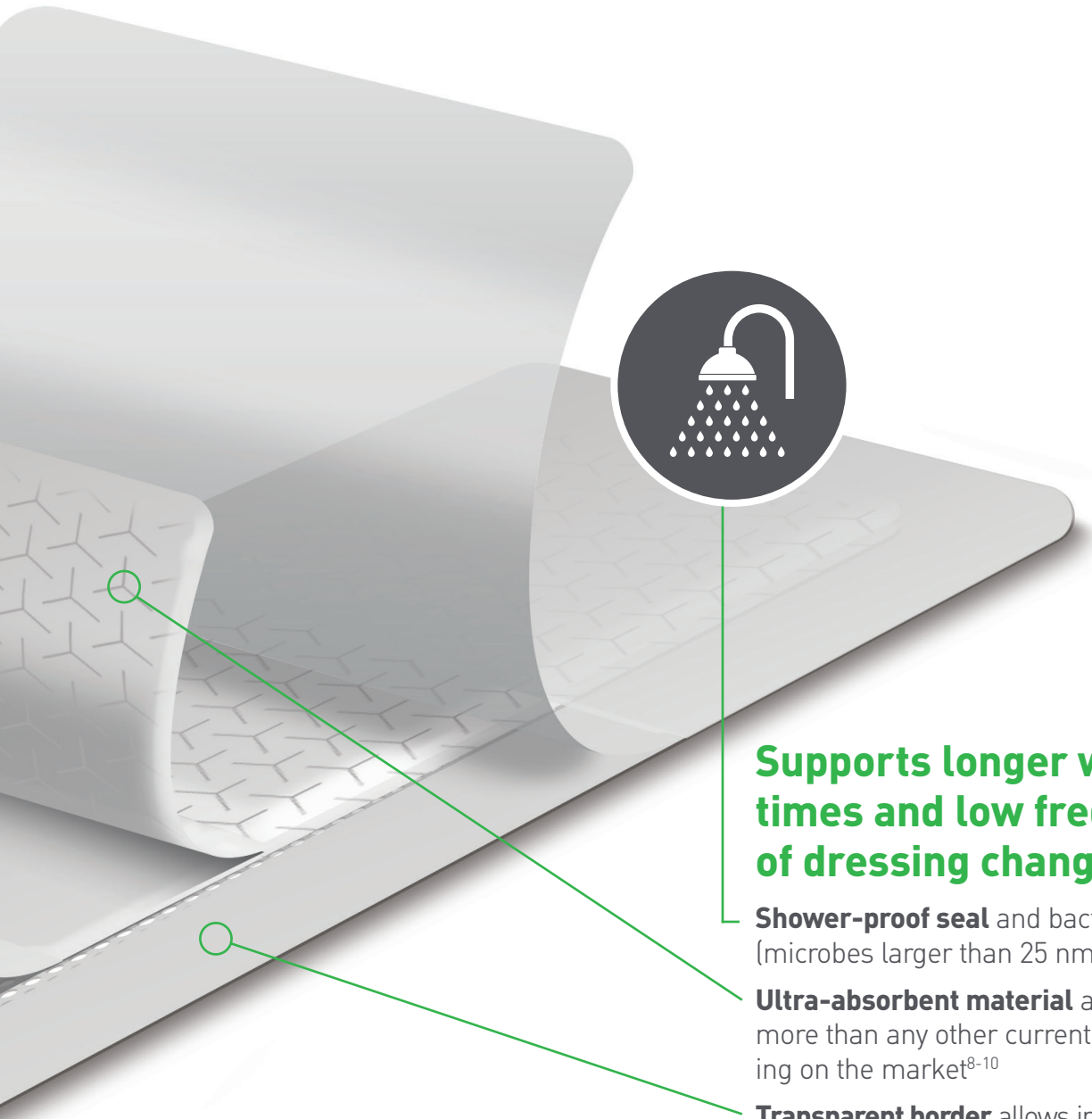
Safetac interface adheres gently, maintaining skin integrity

SafetaC
TECHNOLOGY



Border Post-Op

management without compromises



Supports longer wear times and low frequency of dressing changes⁵⁻⁷

Shower-proof seal and bacteria barrier (microbes larger than 25 nm)

Ultra-absorbent material absorbs more than any other current leading dressing on the market⁸⁻¹⁰

Transparent border allows inspection of peri-wound skin without removing the dressing



Hip



Knee



Cardiac



C-section

Preventing complications for a smooth recovery

The absorbent, gently adhesive dressing that prevents dressing-related skin damage and helps reduce the risk of SSIs.

Preventing skin damage^{1,5-7}

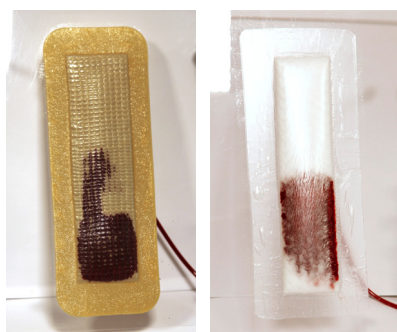
Dressings that adhere aggressively have been shown to cause skin damage such as stripping and blisters, which compromise the skin barrier and increase the risk of infection.^{11,12} Thanks to its Safetac interface, Mepilex Border Post-Op minimise risk of skin damage, safeguarding skin integrity.^{1,5,6}

**Two randomised trials^{5,7}
One prospective trial⁶
One observational trial¹
No blisters.**

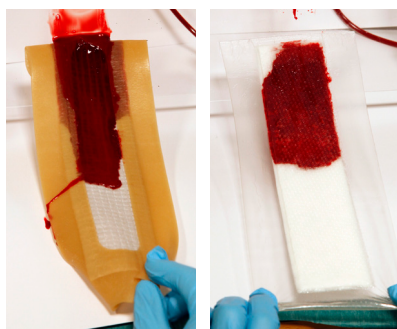
At the end of five separate trials, patients treated with Mepilex Border Post-Op showed no signs of blistering.

Reducing the risk of wound contamination

The dressings have absorbed 20 ml of blood



After 15 min, the dressings are removed

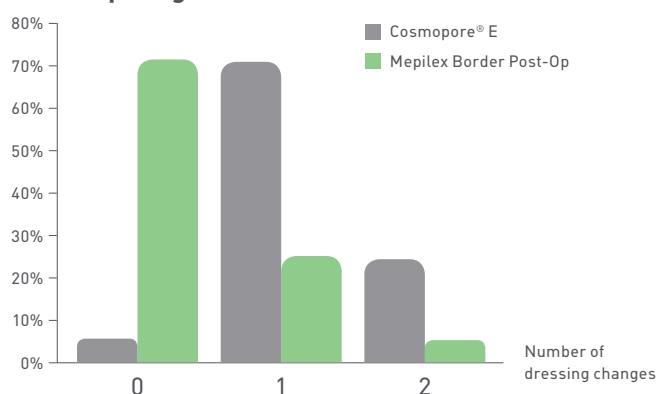


Fiber/hydrocolloid post-op dressing

Mepilex Border Post-Op effectively wicks fluid away from the wound

Poor absorption can lead to frequent dressing changes, each of which exposes the wound to contamination. Mepilex Border Post-Op supports longer wear times by absorbing more than any current leading post-op dressing.⁸⁻¹⁰

Comparing wear times



In a recent randomized trial⁷ on open orthopedic surgery patients, Mepilex Border Post-Op outperformed the comparator in number of dressing changes the first week.



Proven choice for a better outcome

Safetac*, pioneered by Mölnlycke Health Care, delivers above and beyond the ordinary. Proven to help optimize the wound healing journey and even prevent wounds, dressings with Safetac are the safe choice for patients and a champion for higher standards in wound care. In fact, we have a wealth of evidence that supports the

clinical and economic benefits of dressings with Safetac, including Mepilex®, Mepitel®, Mepiform® and Mepitac®. To date, these dressings have helped millions of patients worldwide¹³⁻¹⁶.

*A unique proprietary technology exclusive to Mölnlycke Health Care

Safetac[®]
TECHNOLOGY

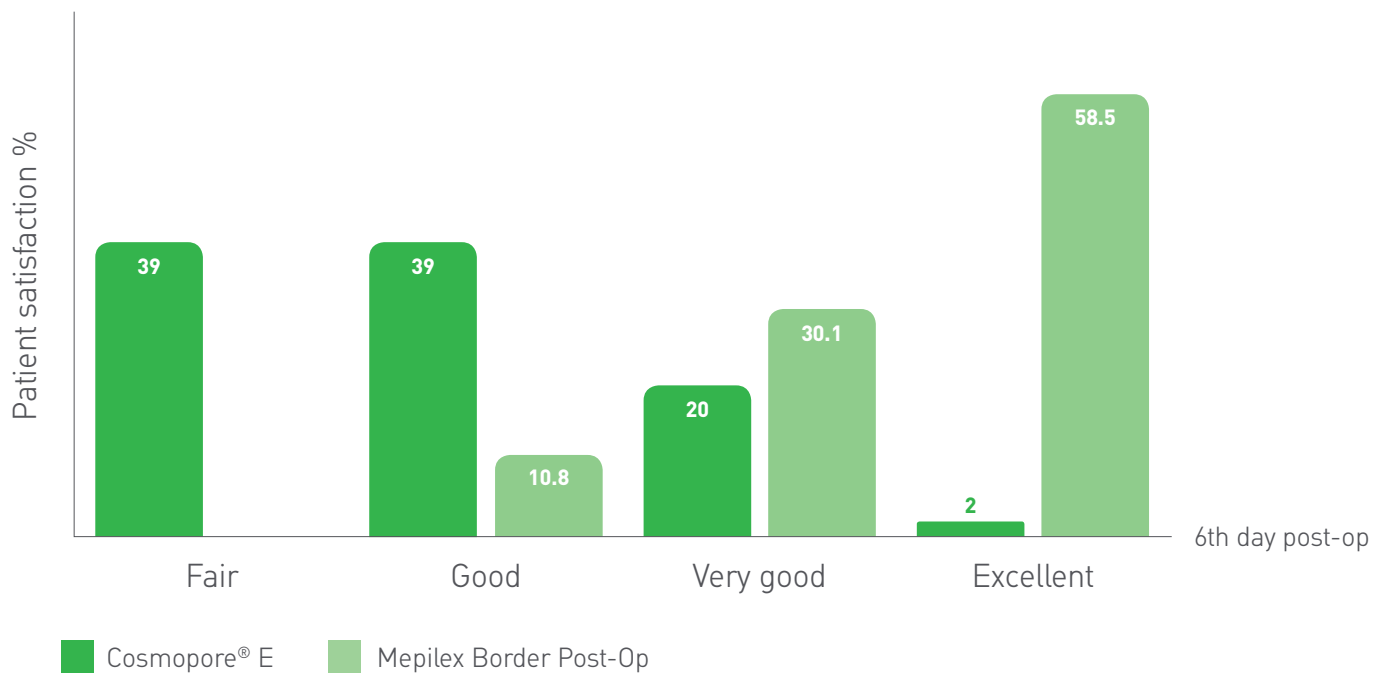
“A surgical wound dressing needs to be flexible, easy to use and easy to apply. It also needs to have good absorption capacity and – most important – not hurt the patient.”

Frida Hjulín, OR nurse, Motala Hospital, Sweden





The overall patient experience of comfort and conformability⁷



Expand your patients' **comfort zones**

The uniquely flexible dressing that supports early patient mobilization

Getting patients moving again as soon as possible after surgery is one essential way to reduce the risk of complications – such as deep vein thrombosis – and to keep recovery on track¹⁷. But dressings that are stiff or have an aggressive adhesive can make mobilization more difficult. Mepilex Border Post-Op is the only surgical wound dressing engineered to stretch in all directions, so it conforms to the body's natural curves – even during movement. This, combined with the gentle adhesiveness of the Safetac interface, makes Mepilex Border Post-Op support patient mobilization.

Preventing blisters. Facilitating mobilization.



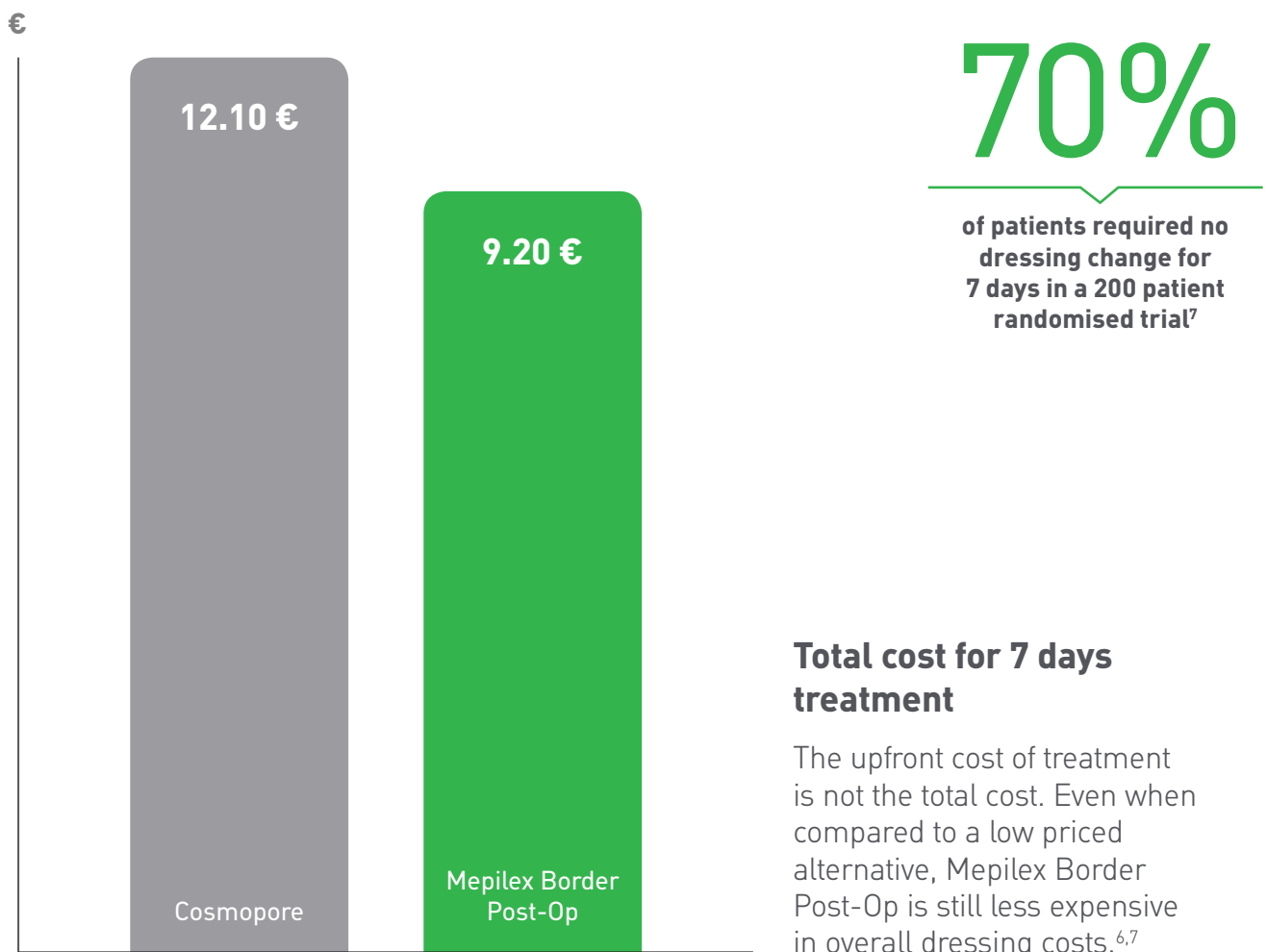
“When patients start doing their range of motion exercises for the knee or hip, they don’t experience pulling of the skin and don’t feel as much pain as they would with another product.”

Merja Bergqvist, Physiotherapist, Motala Hospital, Sweden

The value of confidence

The longwearing dressing that reduces costs^{6,7}

Clinicians everywhere are facing the challenge of having to treat more patients while keeping costs down. Mepilex Border Post-Op can help you reduce dressing-related costs because it supports longer wear times and reduces the number of required dressing changes. In fact, in the majority of cases only one dressing will suffice to treat a patient's wound.





“We chose Mepilex Border Post-Op for its good absorption capacity, which means we don’t have to change dressings as often.”

Jennifer Sjösten, Ward nurse, Motala Hospital, Sweden



NEW

Mepilex® Border Post-Op

- ✓ Helps reduce the risk of SSIs^{1,5-7}
- ✓ Supports early patient mobilization^{1,5-7}
- ✓ Can reduce dressing-related costs^{6,7}



Save more time in the O.R. Mepilex Border Post-Op now available in Mölnlycke procedure tray

All the essentials for your hospital's standardized procedures collected into one efficient, customized package. From gowns and gloves to drapes, sutures and dressings. Available exclusively from Mölnlycke.

Mepilex Border Post-Op ordering information

Art. no	Size [cm]	Pcs/shelf	Pcs/transp.
496100	6 x 8	10	80
496200	9 x 10	10	70
496300	10 x 15	10	100
496405	10 x 20	5	25
496400	10 x 20	10	120

Art. no	Size [cm]	Pcs/shelf	Pcs/transp.
496455	10 x 25	5	30
496450	10 x 25	10	60
496605	10 x 30	5	25
496600	10 x 30	10	40
496650	10 x 35	5	55

REFERENCES: 1. Johansson C. et al. Preventing post-operative blisters following hip and knee arthroplasty. Wounds International, 2012. 2. Dela Valle C. et al. Thromboembolism After Hip and Knee Arthroplasty: Diagnosis and Treatment. Journal of American Academy of Orthopedic Surgeons, 1998. 3. Coello R. et al. Adverse impact of surgical site infections in English hospitals. The Journal of Hospital Infections, 2005. 4. Jenks P. J. et al. Clinical and economic burden of surgical site infection (SSI) and predicted financial consequences of elimination of SSI from an English hospital. The Journal of Hospital Infections, 2014. 5. Van Overschelde, P. et al. A randomised controlled trial comparing two wound dressings used after elective hip and knee arthroplasty. Poster presentation at 5th Congress of the WUWHS, Florence, Italy, 2016. 6. Zarghooni K. et al. Effect of a modern dressing compared to standard dressings on outcome after primary hip and knee arthroplasty: a prospective, non-randomised controlled study. E-poster presentation at EWMA, 2015. 7. Bredow, J. et al. Randomized clinical trial to evaluate performance of flexible self-adherent absorbent dressing coated with silicone layer after hip, knee or spinal surgery in comparison to standard wound dressing. Poster presentation at 5th Congress of the WUWHS, Florence, Italy, 2016. 8. Feili, F. et al. Fluid handling properties of post-operative wound dressings. Poster presentation at 5th Congress of the WUWHS, Florence, Italy, 2016. 9. Feili, F. et al. Blood absorption capacity of post-operative wound dressings. Poster presentation at 5th Congress of the WUWHS, Florence, Italy, 2016. 10. Feili, F. et al. A laboratory valuation of the fluid retention properties of post-operative absorbent dressings. Poster presentation at 5th Congress of the WUWHS, Florence, Italy, 2016. 11. Eastburn, S. et al. A review of blisters caused by wound dressing components: can they impede post-operative rehabilitation and discharge? International Journal of Orthopaedic and Trauma Nursing, 2016. 12. Gupta, S.K. et al. Postoperative wound blistering: is there a link with dressing usage? Journal of Wound Care, 2002. 13. Davies, P., Rippon, M. Evidence review: the clinical benefits of Safetac technology in wound care. Journal of Wound Care, 2008. 14. Davies P. et al. Evidence review: the clinical benefits of Safetac technology in wound care. Journal of Wound Care, 2008. 15. Santamaria N. et al. Clinical effectiveness of a silicone foam dressing for the prevention of heel pressure ulcers in critically ill patients: Border II Trial. Journal of Wound Care, 2015. 16. Santamaria N. et al. An estimate of the potential budget impact of using prophylactic dressings to prevent hospital-acquired PUs in Australia. Journal of Wound Care, 2014. 17. Eastbourne S. et al. A review of blisters caused by wound dressing components: can they impede post-operative rehabilitation and discharge? International Journal of Orthopaedic and Trauma Nursing, 2015.

Find out more at www.molnlycke.com

Mölnlycke Health Care AB, P.O. Box 13080, SE-402 52 Göteborg, Sweden. Phone + 46 31 722 30 00.

The Mölnlycke®, Mepilex®, Mepitel®, Mepiform®, Mepitac® and Safetac® trademarks, names and logotypes are registered globally to one or more of the Mölnlycke Health Care Group of Companies. © 2016. Mölnlycke Health Care AB. All rights reserved. HQWC0097

Cosmopore® is a trademark of PAUL HARTMANN Asia-Pacific Ltd.

